



KUMUL PETROLEUM HOLDINGS LIMITED

**“A ten year
outlook for
the national
energy
company....”**

Wapu Sonk
Managing Director

Kumul Petroleum is an energy company, and in the following decades will;

- Ensure that PNG gets fair-share of the benefits from its own resources.
- Generate revenue for Government to fund PNG's development priorities.
- Create employment and economic opportunities for Papua New Guineans.
- Utilise LNG as a transition fuel in the development of cleaner energy.
- Assist in meeting the growing energy demands of the nation.
- Support renewable energy projects.
- Assist the country becoming a major regional energy provider – in LNG, renewables, carbon capture & offsets.

PETROLEUM DEVELOPMENTS



**KUMUL
PETROLEUM**
HOLDINGS LTD



- Ongoing participation in the PNG LNG Project.
- Participation in the Papua & P'nyang LNG projects with 22.5% equity, carrying 2% for landowner & provincial government interests.
- Pursue commercial development options for gas in PRLs held over Pandora, Barikewa, Uramu & Kimu discovered gas fields – to be linked to joint venture approved Kumul LNG e-train via existing & planned pipelines.
- Participation in other petroleum/LNG developments.
- Establishment of petrochemical industries.

NATION-BUILDING PROJECTS – WILL CONTINUE



- Health infrastructure support.
- Education & training support.
- Electrification – NiuPower and rural electrification.
- Community development & sports support.
- Training & Fabrication Facility.



TRAINING & FABRICATION FACILITY



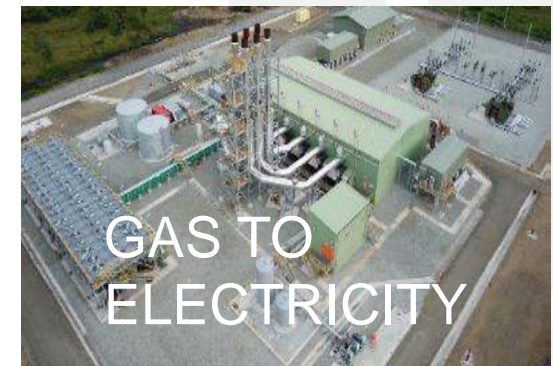
- A \$100 million industry training & fabrication enterprise to enhance national content and lower the cost of major energy projects.
- Strategic partnerships involved in facility design, construction, and operation.
- Capacity of up to 20,000 tonnes of product a year.
- Direct employment of 1,000 people, and 3,000 indirect jobs.
- Facility is a foundation activity for a “Central Special Economic Zone”.
- Kumul Petroleum Academy will move to this location.

- Apart from being a commercially viable and profitable operation, this facility has huge social benefits;
 - Increased national content (trained employees, local goods & services, SME development)
 - Taxes to Government.
 - Highly trained and exportable skills.



GREEN FUTURE

- PNG has huge and largely unexploited natural energy sources – hydro, wind, solar and geothermal - resources that could be developed to produce electricity domestically and for export.
- PNG has large unlogged tropical forest areas - a huge ‘carbon sink’ that could be harnessed through properly designed and validated projects to generate carbon offsets, enabling potential future LNG exports to be net Zero, in line with National Government commitments.
- KPHL is planning carbon capture and/or offset projects to cover its direct existing and future CO2 emissions and those arising from its equity positions in LNG projects.
- KPHL will investigate petrochemicals – such as blue/green ammonia production



KPHL IN TEN YEARS



**KUMUL
PETROLEUM**
HOLDINGS LTD

LNG (20.5% player in 14 mtpa industry)
PNG LNG
Papua LNG
P'nyang LNG
Kumul LNG train

Energy

Solar
Co-generation/SEZ supply
Gas-fired electricity generation
Carbon offsets/capture

Dividends
Tax Credit Projects
Taxes
Government Support
Provincial Govt/LO's
Employee Development

Non-Oil/Gas (nation – building)
Health sector infrastructure
Training & education
Community & sports development

Petrochemicals

- Urea & ammonia

Many **benefits** will be generated by KPHL activities that are already underway or planned, in line with company vision:

“Building the nation through its energy resources”