



Opportunities for the PNG Extractive Industry to drive Energy Access and Transition

Manu Rawali

UPNG Centre of Renewable Energy

admin@upngcore.org or mrawali@upng.ac.pg



A photograph of a tropical village scene. In the foreground, there is a grassy area with a utility pole. In the middle ground, there are several traditional huts with thatched roofs. The background is filled with dense tropical vegetation, including many palm trees. The sky is overcast and grey. The text 'Current Situation' is overlaid in the center in a large, white, sans-serif font. Below it, the text 'Energy Access and Transition' is overlaid in a smaller, white, sans-serif font.

Current Situation

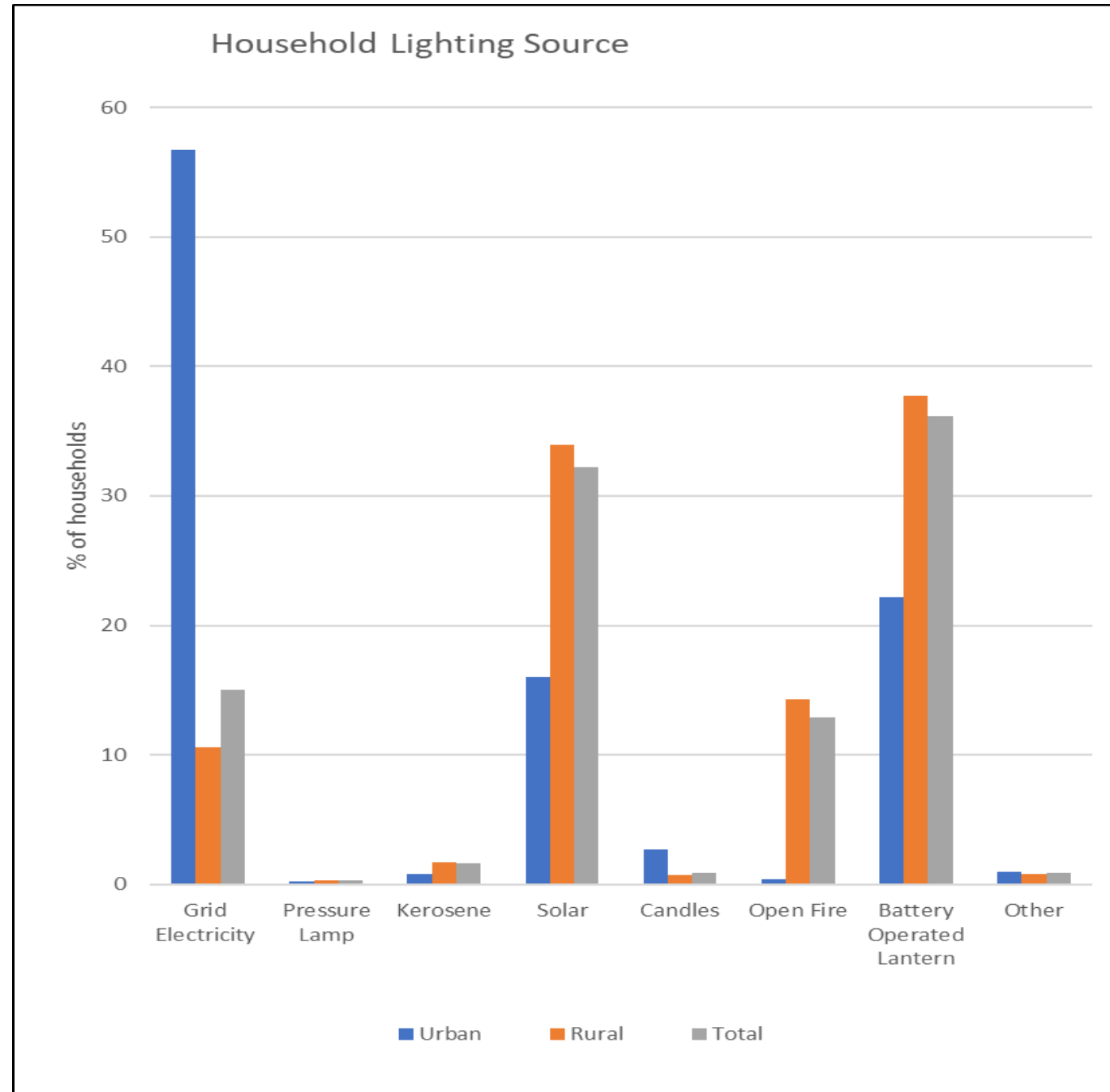
Energy Access and Transition

Energy Access

- Lowest energy access rate in the Southeast Asia Pacific Region including the lowest ranked in almost all development indicators.

Why?

- Geography
- Very high rural population
- Sparsely scattered
- Affordability and Cost
- Human Capacity
- Utility
- Absent Leadership
- Land tenure

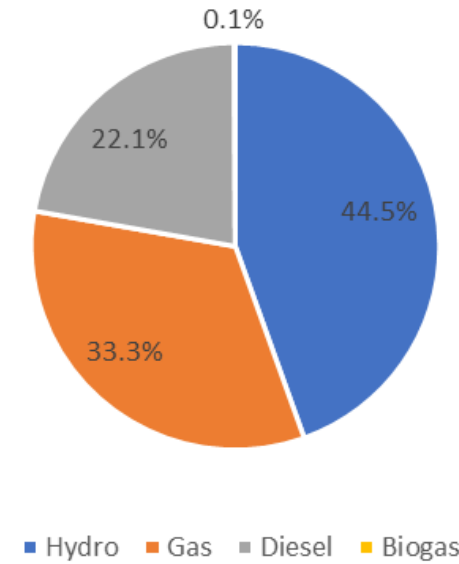


PNG's Renewables Contribution in Electricity Sector

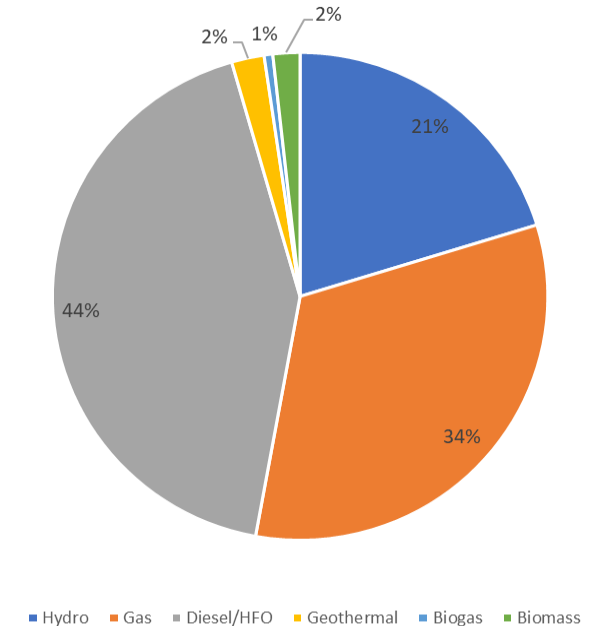
Why the low renewables?

- Legislation
- Regulations
- Utility
- Land tenure
- High cost of doing business

PNG Power 1500 GWh Renewables Breakup, 2022



Breakup of 5000 GWH (all sectors) in 2022



Major Players in Extractive Industry are committed

- Paris Agreement : To keep global warming to no more than 1.5°C – emissions need to be reduced by 45% by 2030 and reach net zero by 2050.
- Decarbonizing Options
 - Eliminate methane emission and slashing flaring
 - Electrifying operations/Efficiency/ Renewables/Hydrogen
 - CCS
 - Carbon offset strategies



Award-winning carbon offset project benefitting locals

Entities	Decarbonisation Targets
Santos	net-zero by 2040
Exxonmobill	net-zero by 2050
TotalEnergies	net-zero by 2050
Newmont	net-zero by 2050
Harmony	net-zero by 2045
K92 Mining Inc	25% reduction by 2030
Ok Tedi	??

A sunset over a beach with silhouettes of people in the foreground. The sky is filled with soft, golden light from the setting sun, which is partially obscured by clouds. The beach is dark, and the water reflects the light from the sky. In the foreground, several people are silhouetted against the water and beach, some standing and some walking. The overall mood is serene and contemplative.

Opportunities

Energy Access + Transition

1. Geography





2. Motivated and Resourced





3. Offsetting



4. Leapfrogging

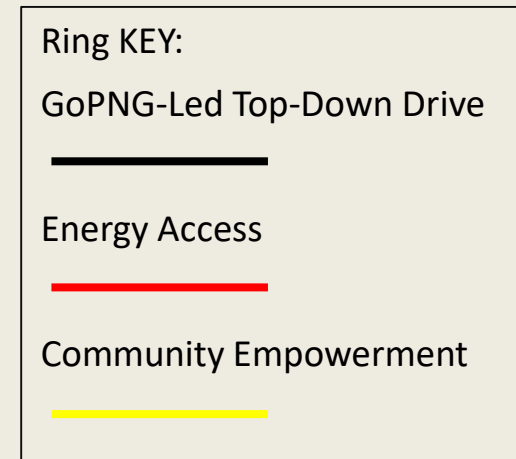
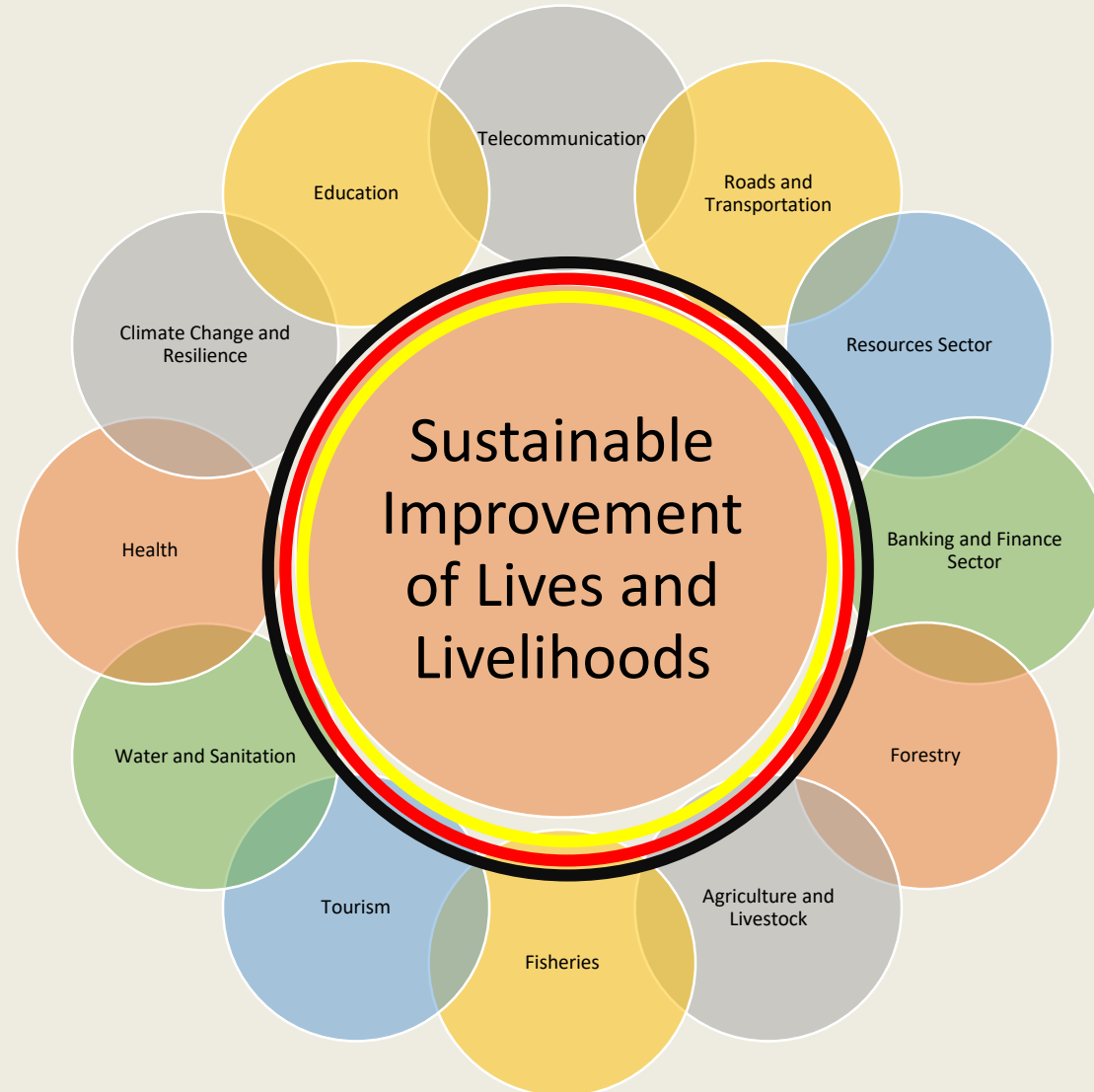
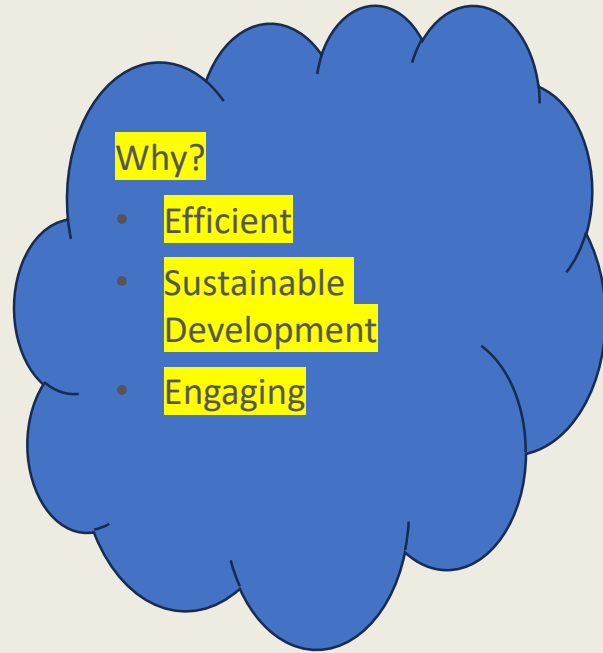




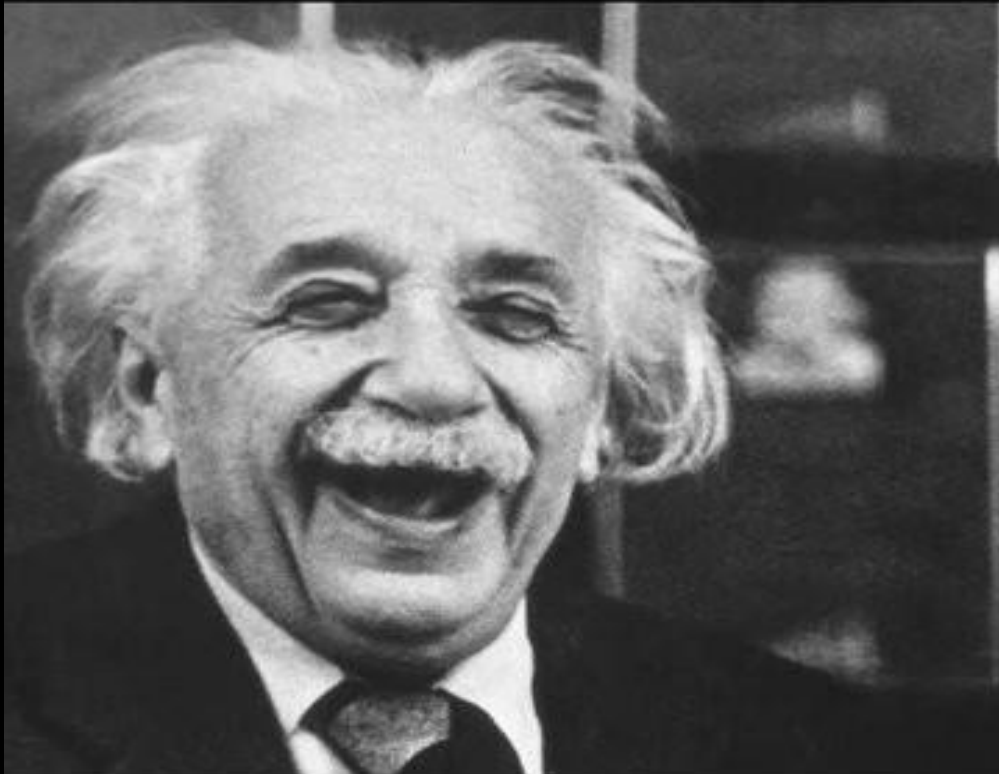
Enablers

To drive Energy Access and Transition

Integrated Sustainable Development Pathway to Increase Energy Access



Thank you and see you during networking sessions for questions



Insanity is doing the same things
over and over again and expecting
different results.

- Albert Einstein